



Lure



TABLE OF CONTENTS

Synopsis

Principal Character

Film Inspiration

Setting

Themes/Motifs

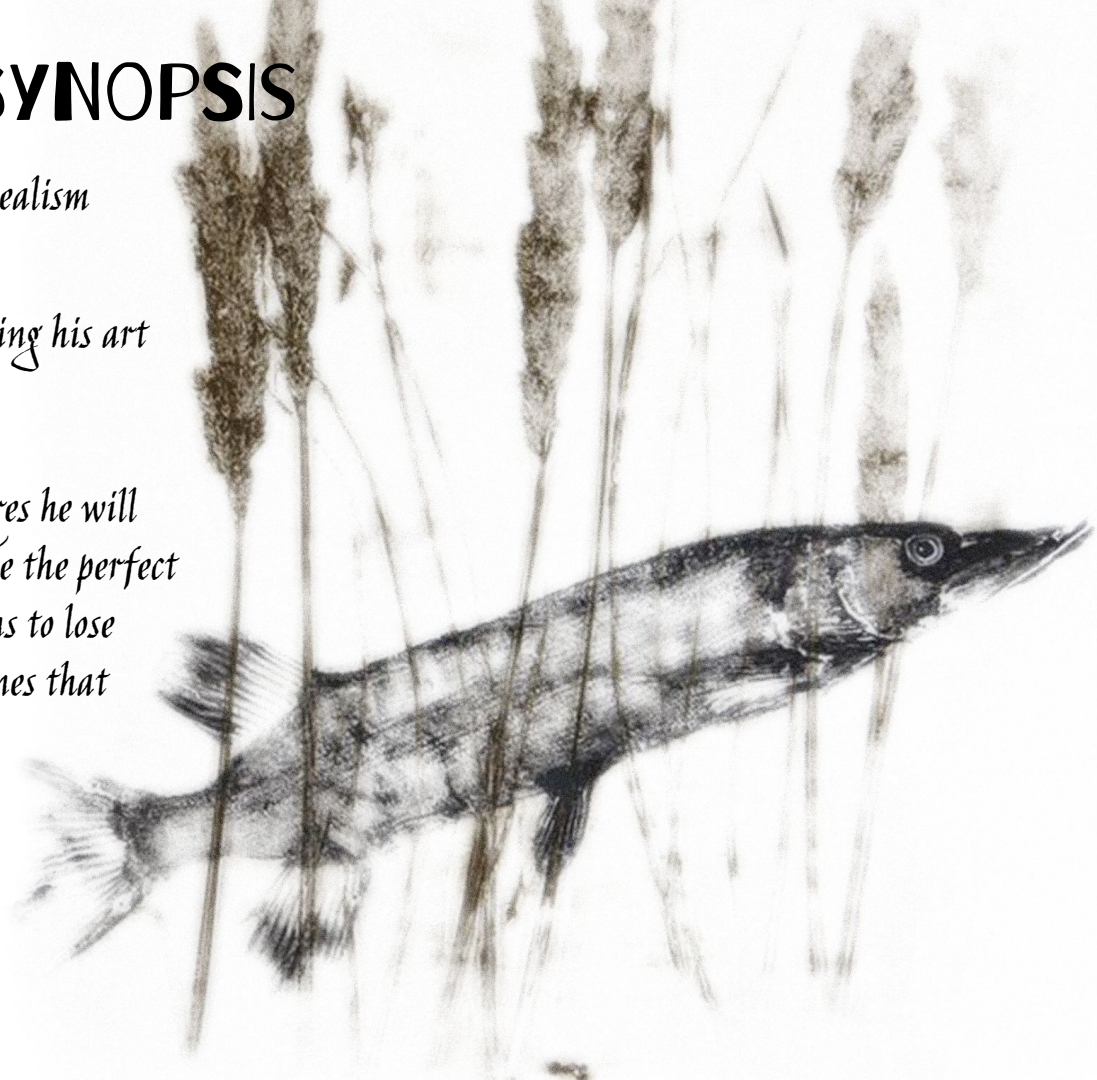
Editing/Cinematography

SYNOPSIS

Genre: Psychological Thriller/ Horror/ Magical Realism

Logline: An Angler becomes so obsessed with perfecting his art that he ends up catching himself

Synopsis: The Angler arrives at his cabin and declares he will catch 1000 fish because only then will he have made the perfect lure. While he attempts to achieve his goal he begins to lose himself to the work. As he nears his objective the lines that define reality begin to blur.



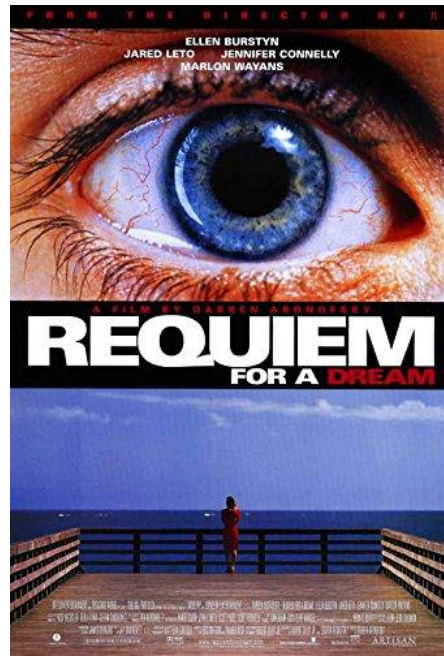
PRINCIPAL CHARACTER



The Angler

A man who is obsessed with perfecting the art of fly fishing. He thinks that if he can catch 1000 fish while iterating his lures, he will eventually end up with the perfect fish hook.

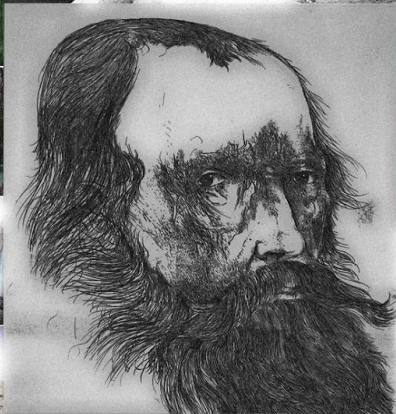
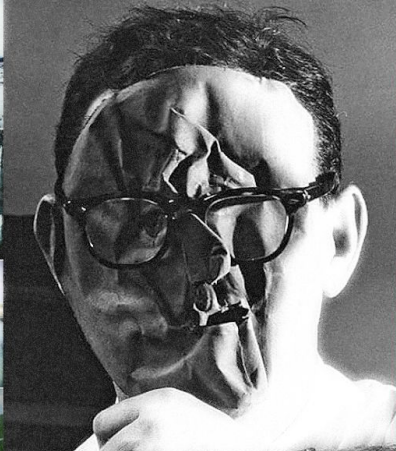
FILM INSPIRATIONS

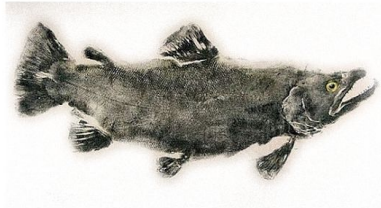
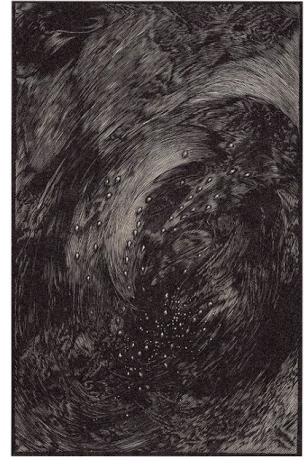
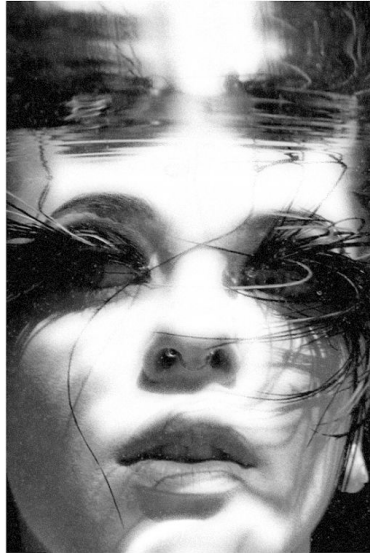
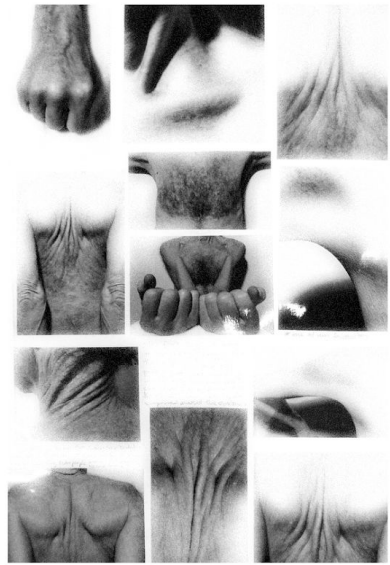


THE COMICS OF JUNJI ITO



MOOD BOARD 1.







SETTING

Yellowstone- Island Park and surrounding area. Combination of thick forest, open fields, and bodies of water.

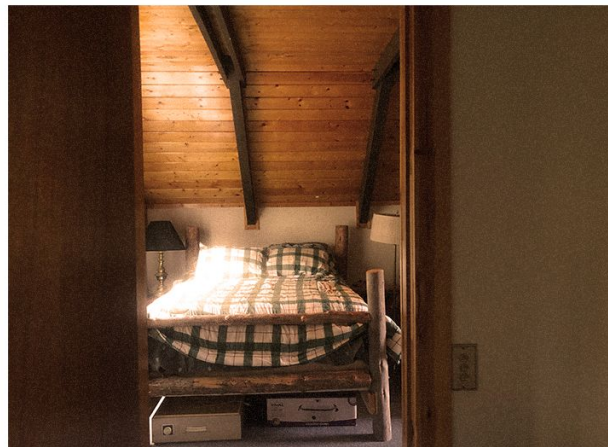
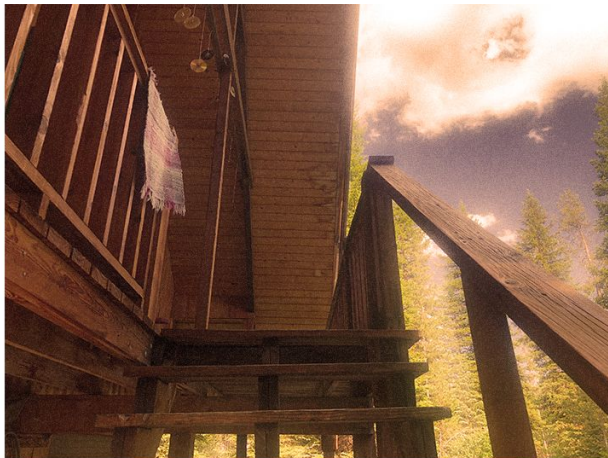
PHOTOS OF ACTUAL LOCATION



Exterior of Cabin



River



Interior Cabin

THEMES/ MOTIFS

Pitfalls of Obsession/ Hubris -

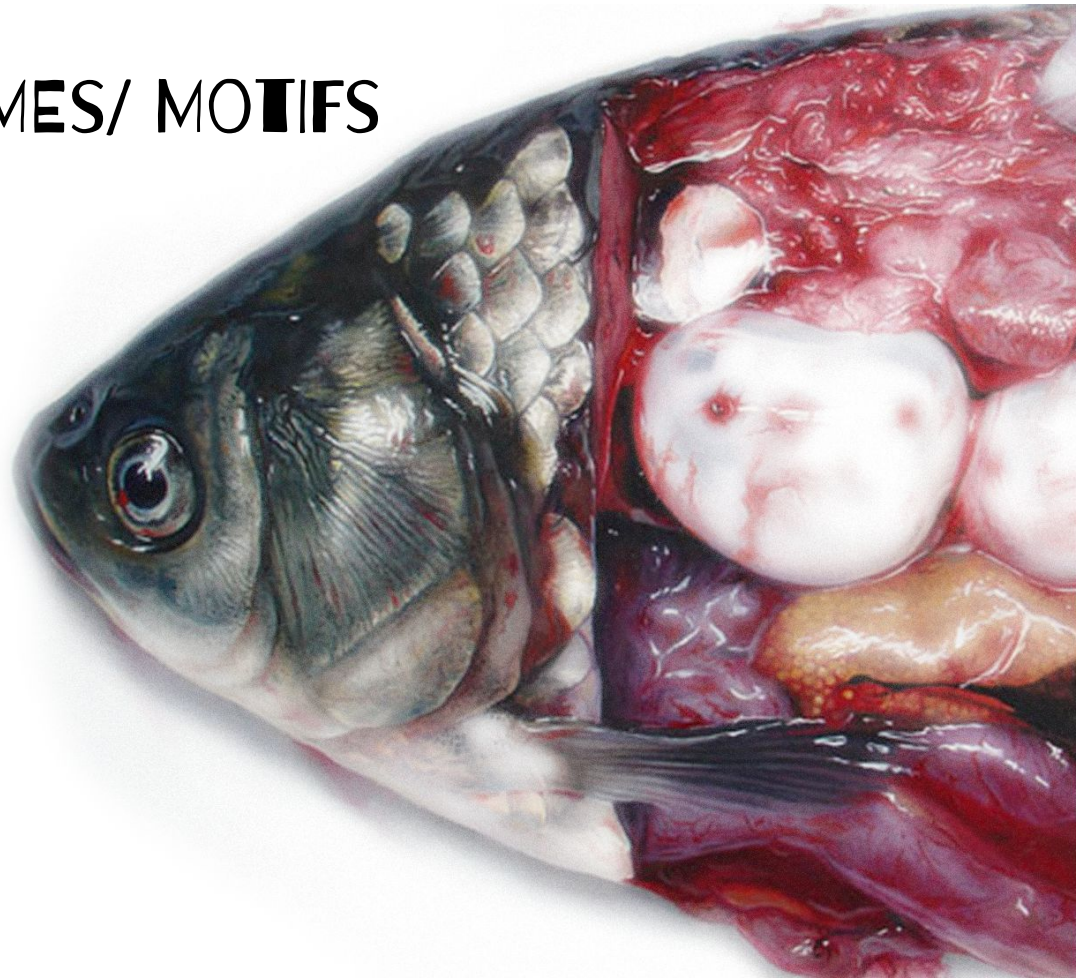
Becoming obsessed with something to the point of losing sight of all else may result in loss of oneself.

(Man vs Himself) vs Nature

Fishing

Magical Realism

Blurred lines between reality and un-reality.



EDITING

The Film relies heavily on **disjunctive editing** -in order to transcend ordinary ways of seeing and lend the project a sense of mythic and hyperbolic.

The editing itself will inform the viewers of the narrative and **atmosphere** of the film.



Rather than following cuts that attempt to maintain a certain verisimilitude of space and time - this film will employ cuts that are focused on creating a **rhythm** that creates a sense of horror and tension.

The pacing of film is to have the same sense of surreal quality as the manga artist Ito through **sudden moments of surreal horror** before resetting to a sense of normalcy.

CINEMATOGRAPHY

Frame within and frame

Look for this opportunity within a shot

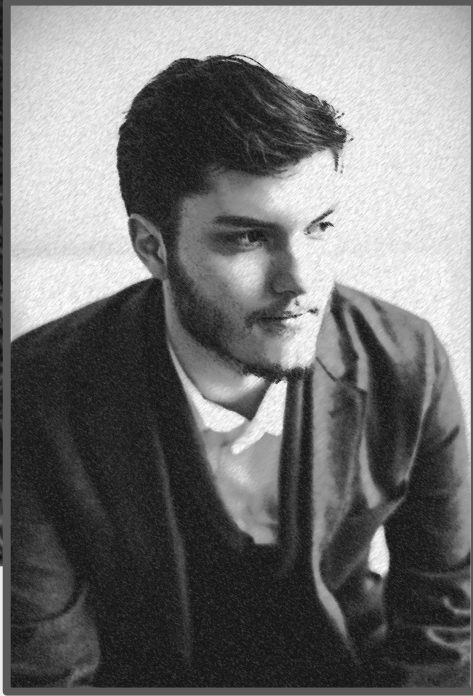
Controlled Lighting (spotlight/masked light source, deliberate shadows)

Underwater lighting (lit from below)

Shadows/Lights

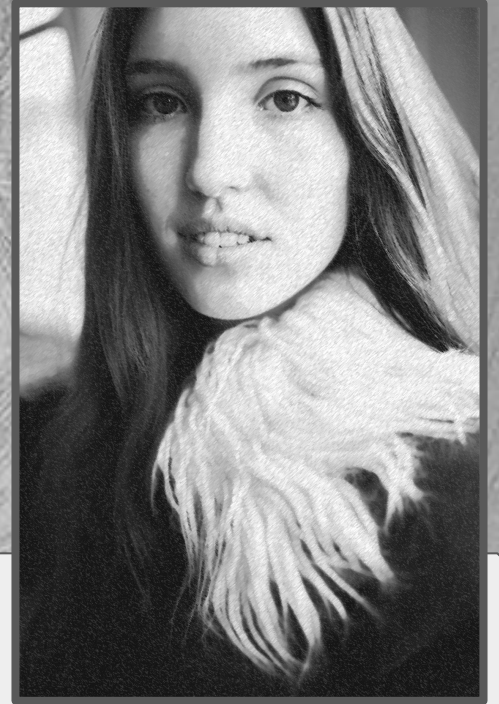
Special attention to motion prompted transitions.

Vertical movement (camera/blocking)



Max Nebeker
Writer, Director and Producer

PROJECT LEADERS



Lucy Nebeker
Writer, Director and Producer



Thank you